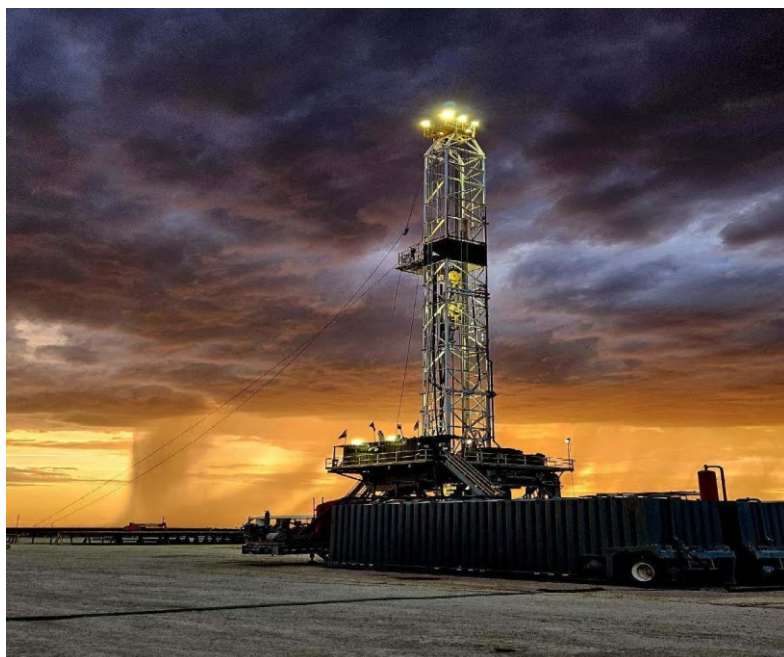


<b>Year Modified:</b>	2013
<b>Mast</b>	
Type:	Telescoping
Height:	145 ft.
Max Allowable Static Hook Load:	750,000 lbs.
Racking Capacity (5 in DP):	22,000 ft. (4,50,000 lbs.)
<b>Drawworks</b>	
Drawworks Make/Model:	National 110 UE
Total Input Power:	1,500 hp
Number of Motors:	2
Drilling Line Size:	1-3/8 in.
<b>Traveling Equipment</b>	
Traveling Block Make/Model:	NOV 500TB-500
Hoisting Capacity:	500 tons
<b>Substructure</b>	
Type:	Sling-Shot
Rig Floor Height:	29 ft.
Clear Working Height:	25 ft.
Setback Capacity:	450,000 lbs.
<b>Rotary Equipment</b>	
Top Drive Make/Model:	NOV TDS-11SA
Hoisting Capacity:	500 tons
Maximum Continuous Torque:	37,100 ft.-lbs.
Total Input Power:	800 hp
Number of Motors:	2
Rotary Table Make/Model:	NOV C-275
Size:	27-1/2 in.
Dead Load Capacity:	500 tons
<b>BOP System</b>	
Annular Preventer Make/Model:	Shaffer
Size:	13-5/8 in.
Pressure Rating:	5,000 psi
Ram Preventer Make/Model:	Cameron Type U – Single
Size:	13-5/8 in.
Pressure Rating:	10,000 psi
Ram Preventer Make/Model:	Axon Type U - Double
Size:	13-5/8 in.
Pressure Rating:	10,000 psi
<b>BOP CONTROL UNIT</b>	
Make/Model :	Koomey Type
Pressure Rating :	3000/5000 PSI
<b>Catwalk System</b>	
Make/Model:	Forum- max Gull-Wing
Load:	rack capacity 40,000 lbs
Max lift:	8,000 lbs
Weight Handling:	Length: 58.5 ft up to 16,000 lbs



<b>Gensets</b>	
Engine Make/Model:	CAT 3512C -1500HP ea
Generator Make/Model:	Kato 1750 kVA
Number of Gensets:	4
<b>Power Distribution</b>	
Gen. Control Make/Model:	GE - E 9000 IEC 3X 4 SCR
Power Distribution:	480V & 600V
<b>Mud Pumps</b>	
Pump Make/Model:	EMSCO Type FB-1600 Triplex
Total Input Power per Pump:	1,600hp
Pressure Rating:	7,500 psi
Total Number of Pumps:	3
<b>Mud Handling/Solids Control</b>	
Total Mud Volume:	1,100 bbls (550 bbls X 2 )
Shale Shakers Make/Model:	Derrick Hyperpool 4P
Number of Shakers:	3 (LMSS)
Desander Make/Model:	Derrick In-Line 2-Cone
Number of Desanders:	1TRI-FLO Round 10-Cone
Deslitter Make/Model:	1TRI-FLO Mud D-Gasser 1
Number of Desilters:	Tri-flo
Degasser Make/Model:	TRI -FLO
Number of Degassers:	1
<b>Rig Walking Systems</b> Type:	Stealth Walker Oil Works
Load Capacity:	Hydraulic 3,000,000 lb total lift capacity
<b>Iron Roughneck</b>	
Make/Model:	NOV ST 80

*Note: Equipment subject to client-specific requirements. No part of this document may be reproduced or transmitted without prior consent of ADIL. Rev 03/24*

### Design Features (All main components confirm to API specifications)

## Mast & Substructure

- Mast and substructure are raised via hydraulic cylinders, and the mast sections are scoped via the Drawworks
- Mast is completely assembled at horizontal position, pinned to the drill floor, and with the drill floor in the lowered position
- Beams are integrated into the mast structure for the dissipation of torque generated by the top drive during operation.
- Substructure's slingshot design allows floor equipment to be installed in its lower position and swing up in place during the raising operation. Subsequently, it is all lowered simultaneously as the rig is lowered.
- Maximum package for transportation for either the mast or substructure is 55.6 feet in length x 13.5 feet in width x 9.4 feet in height. Maximum weight associated with this package is 32,000 lbs. or 16 metric tons.

## Drawworks

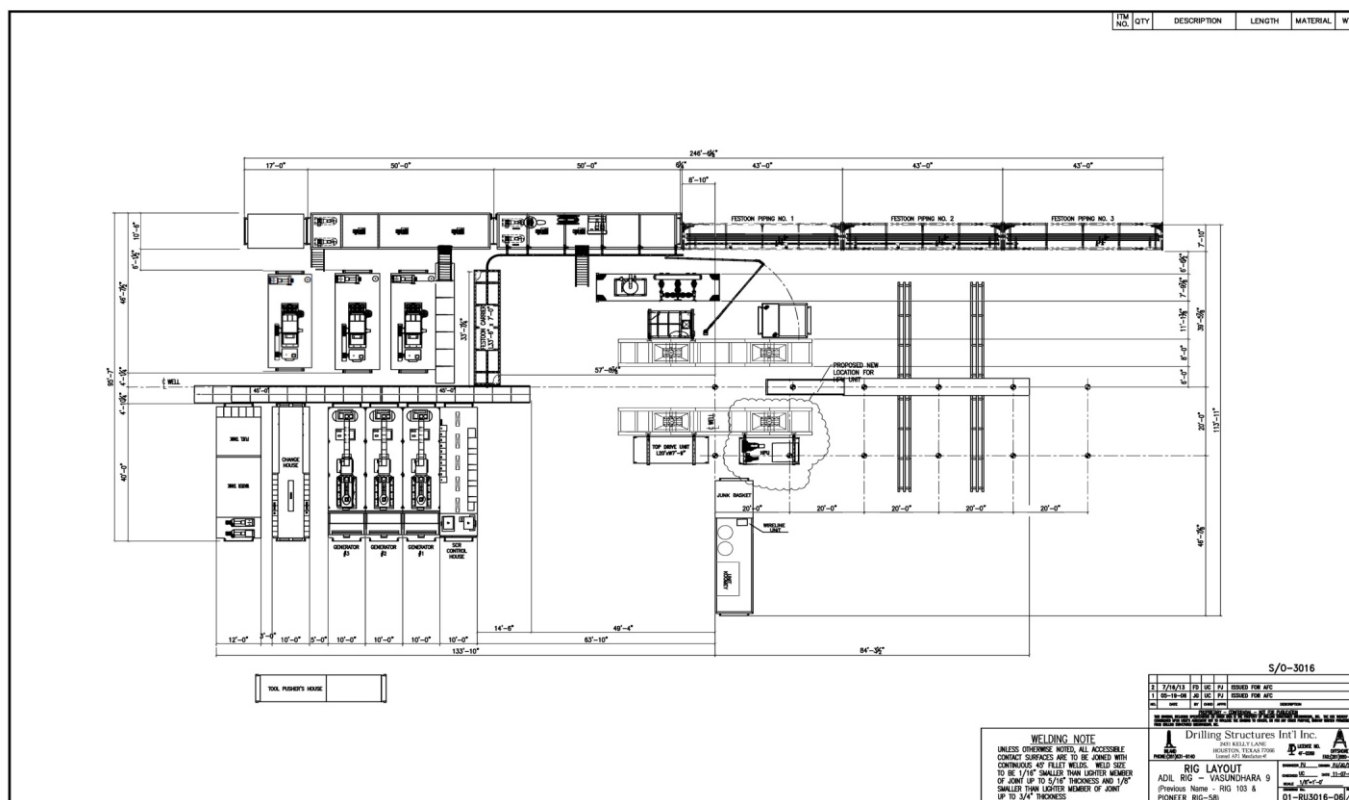
- Unified Electric drive, which offers smoother operation, better control, and improved energy efficiency compared to traditional mechanical or diesel systems.
- Can achieve constant bit weight and automatic bit feed control 0.3 – 197 ft/hr (0.1-60 m/hr) allows the system to maintain consistent weight on bit (WOB) during drilling, optimizing penetration rates while protecting the drill bit and string
- Drawworks features a simple mechanical transmission and reliable controls.
- Brake system is a combination of hydraulic disc brakes and dynamic braking.
- Motor, gearbox, drum, lubricating system and disc brake are installed on skid as one piece for ease of transportation.
- Digital control of drawworks parameters, such as hook speed, hook position, automatic drilling and dynamic braking. Drawworks' air and hydraulic systems controlled by the programmable logic controller (PLC) system in driller's console.

## Mud Pumps

- Three (3) EMSCO Type FB - 1600 1(Triplex 1600 HP) 7500 psi mud pump packages powered by 2 ea. GE 752 type traction motor.

## Controls

- Intelligent driller control uses advanced variable frequency drive (VFD) control technologies and integrated PLCs. Driller monitors and operates essential drilling functions from a driller's chair located on the rig floor.



*Note: Equipment subject to client-specific requirements. No part of this document may be reproduced or transmitted without prior consent of ADIL. Rev 03/24*